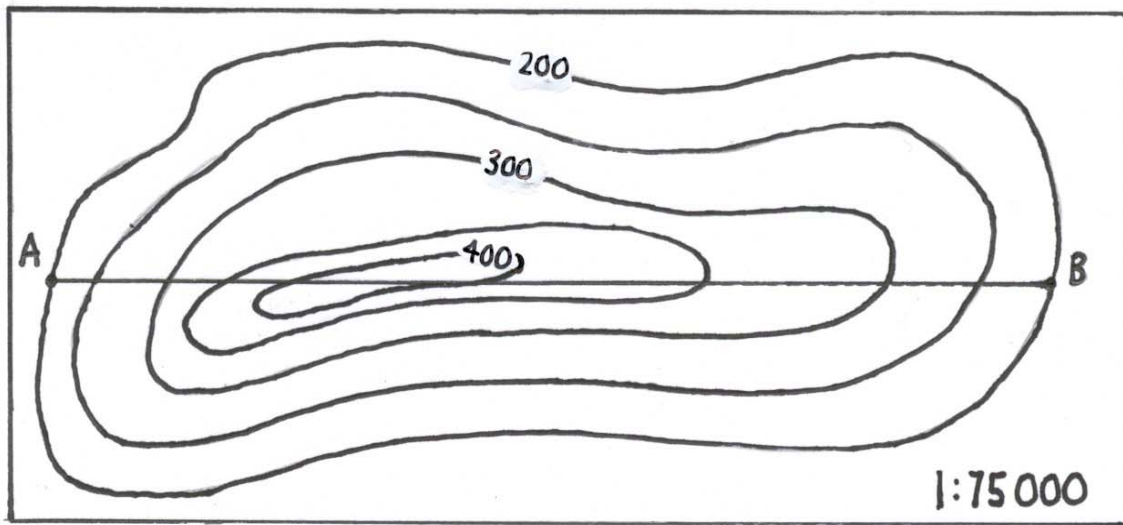


Geography 12
Cross-Section Profile Practice
Calculating Vertical Exaggeration Practice

- 1) Construct a cross-section profile for A to B. Use a Vertical Scale of 1cm represents 50m. Also calculate the vertical exaggeration for the profile.



- 2) Construct a cross-section profile for A to B. Use a Vertical Scale of 1cm represents 200m. Also calculate the vertical exaggeration for the profile.

